

REVISIONS:	BY

Slab and Foundation Notes

SLAB REINFORCEMENT
 FLOOR SLABS SHALL BE REINFORCED BY STEEL REINFORCING BARS AT RE-ENTRANT CORNERS SUCH AS INSIDE CORNERS OF AN L-SHAPED SLAB. RE-ENTRANT CORNERS SHALL HAVE TWO PIECES OF #4 REINFORCING BAR 36 INCHES (914 MM) LONG PLACED DIAGONALLY TO THE CORNER, 12 INCHES (305 MM) APART, WITH THE FIRST BAR PLACED 2 INCHES (51 MM) FROM THE CORNER. ALL REINFORCEMENT SHALL BE APPROPRIATELY POSITIONED IN THE UPPER THIRD OF THE SLAB.

SLAB SPECS
 4" THICK 2500 PSI CONCRETE SLAB WITH #6 @ 10" O.C. W/VE OVER 6 MIL VAPOR BARRIER OVER CLEAN WELL COMPACTED TREATED TREATED SOIL.
 3000 PSI FIBERESH IS AN ACCEPTABLE SUBSTITUTE FOR #6 @ 10" O.C. W/VE.
 ALL EXTERIOR OPENINGS TO HAVE MIN. 36" x36" CONCRETE PAD, TO BE POURED AT TIME OF DRIVEWAY.

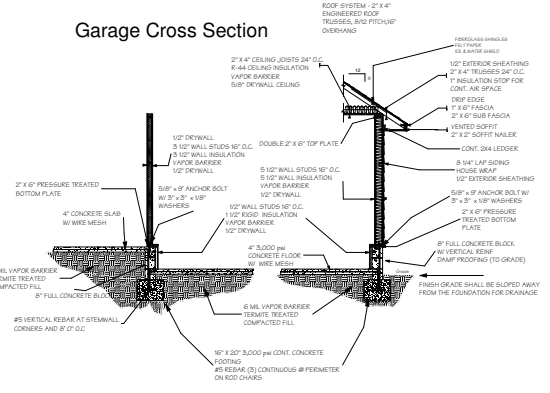
SLAB POURED INTO STEM WALL
 WHERE CONCRETE BLOCKS ARE USED AS SLAB FORMS, THE SUB-SLAB MEMBRANE SHALL EXTEND HORIZONTALLY AT LEAST 1 INCH (25.4 MM) INTO THE STEM WALL, BUT SHALL NOT EXTEND UPWARD ALONG ANY VERTICAL FACES OF THE STEM WALL. THE CONCRETE SLAB SHALL BE POURED INTO THE STEM WALL TO COMPLETELY FILL ITS OPEN VOLUME TO FORM A CONTINUOUS AND SOLID STEM WALL CAP OF MINIMUM 6 INCH (152.5 MM) THICKNESS. FRAMED EXTERIOR WALLS SHALL BE SEALED OR GASKET TO THE SLAB.

DAMP PROOFING
 DAMPPROOFING APPLIED BENEATH THE FLOOR SLAB SHALL CONSIST OF 6 MIL (0.15 MM) MINIMUM POLYETHYLENE WITH JOINTS LAPPED NOT LESS THAN 6 INCHES (152.5 MM) AND TAPED, OR OTHER APPROVED MATERIALS HAVING A MAXIMUM PERM RATING OF 0.5.

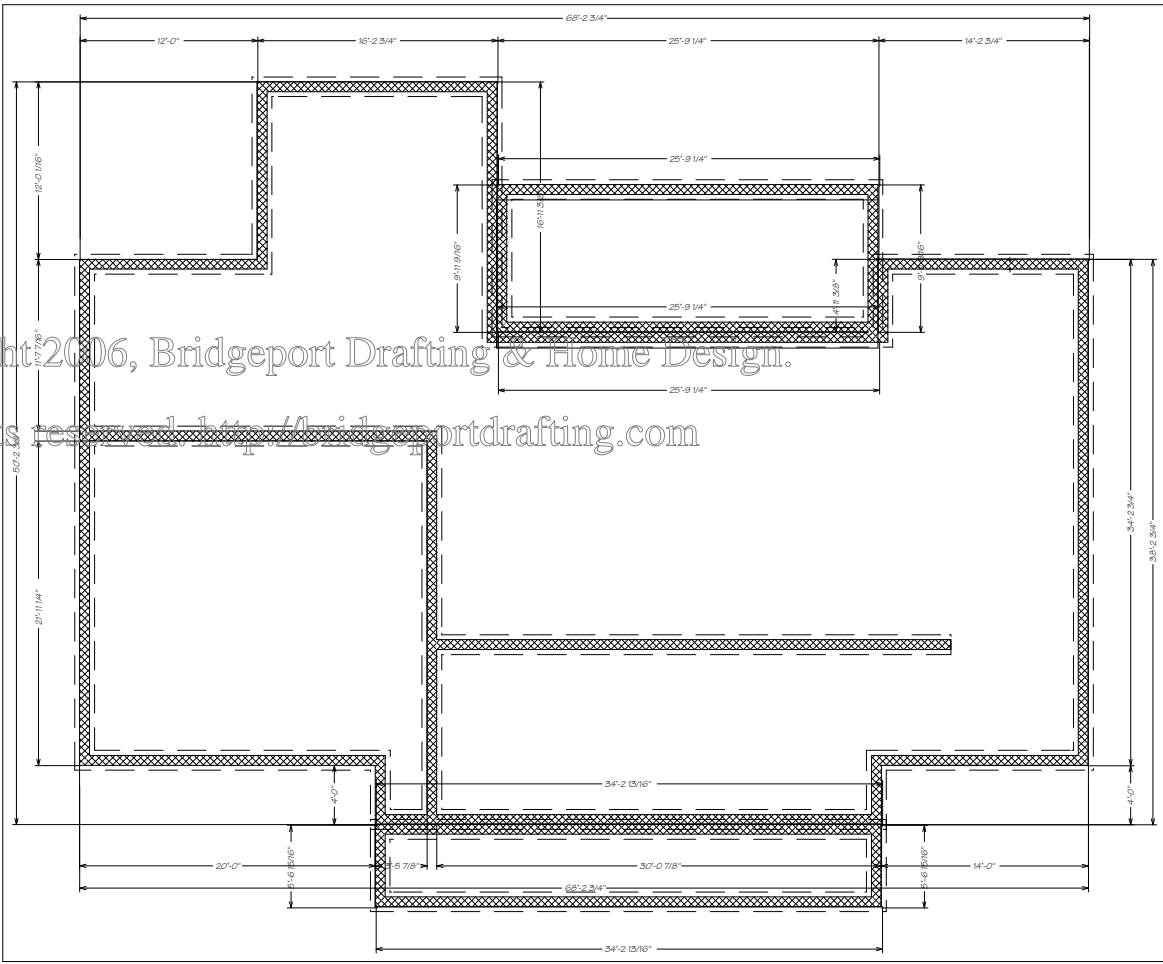
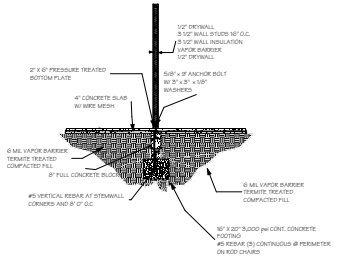
REINFORCING STEEL
 VERTICAL AND HORIZONTAL WALL REINFORCEMENTS SHALL NOT BE PLACED WITHIN THE OUTSIDE HALF OF THE WALL.

Copyright © 2006, Bridgeport Drafting & Home Design.
 All rights reserved. <http://www.bridgeportdrafting.com>

Garage Cross Section



Internal Load Bearing Wall



FOUNDATION

Bridgeport
 Drafting & Home Design
 216 Bridgeport Road
 Palatka, FL 32177
 386.328.1593

JOB: Palatka, Florida
 - Drawn by: Bobby Hinton

project #

date:

SHEET NO.